

## DIRECT OPERATED SOLENOID VALVE

### A4-0001

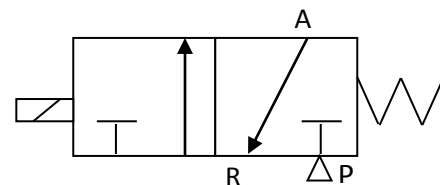
### (D1X600)

#### VALVE CHARACTERISTICS:

VALVE FUNCTION:	3 WAY
ORIFICE:	.031 in (0.8mm) Cv=.02
PRESSURE RANGE:	0-80 psig
VOLTAGE:	12 Vdc
POWER:	0.6 Watts
CONNECTOR TYPE:	DIN CONNECTOR
VALVE PORTS AND MOUNTING:	10-32 (M5x.8), PORTS IN BODY
SEALS:	NBR (BUNA N)
TEMPERATURE RANGE:	0° To 150°F (-18° To 65°C)
MEDIA:	Air and inert gases.
FILTRATION	40 micron
LUBRICATION	Not Required

#### VALVE SYMBOLS:

NORMALLY CLOSE



#### DRAWING:

# SEE DRAWING 03-0458