

DIRECT OPERATED SOLENOID VALVE

A4-0003

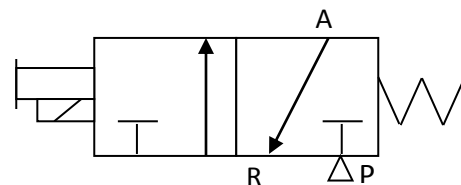
(D1X286)

VALVE CHARACTERISTICS:

VALVE FUNCTION:	3 WAY
ORIFICE:	.031 in (0.8mm) Cv=.02
PRESSURE RANGE:	0-80 psig
VOLTAGE:	12 Vdc
POWER:	0.6 Watts
CONNECTOR TYPE:	DIN CONNECTOR
VALVE PORTS AND MOUNTING:	MANIFOLD MOUNT
SEALS:	NBR (BUNA N)
TEMPERATURE RANGE:	0° To 150°F (-18° To 65°C)
MEDIA:	Air and inert gases.
FILTRATION	40 micron
LUBRICATION	Not Required

VALVE SYMBOLS:

NORMALLY CLOSE



DRAWING:

SEE DRAWING 1E-0064