

# DIRECT OPERATED SOLENOID VALVE

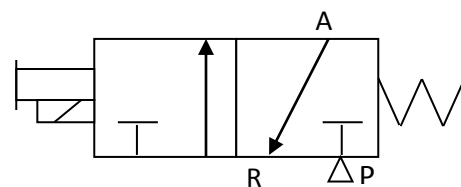
## D1X243

### VALVE CHARACTERISTICS:

VALVE FUNCTION:	3 WAY
ORIFICE:	.062 in (1.6mm) Cv=.04
PRESSURE RANGE:	-15 psig (vacuum)
VOLTAGE:	24 Vdc
POWER:	.6 Watts
CONNECTOR TYPE:	ELECTRONIC
VALVE PORTS AND MOUNTING:	10-32 (M5x.8), PORTS IN BODY
SEALS:	NBR (BUNA N), POLYURETHANE
TEMPERATURE RANGE:	0° To 150°F (-18° To 65°C)
MEDIA:	Air and inert gases.
FILTRATION	40 micron
LUBRICATION	Not Required

### VALVE SYMBOLS:

NORMALLY CLOSE



### DRAWING:

