

## DIRECT OPERATED SOLENOID VALVE

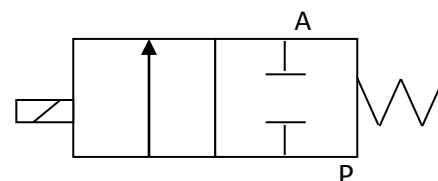
### D1X295-3

#### VALVE CHARACTERISTICS:

VALVE FUNCTION:	2 WAY
ORIFICE:	.089 in (2.3mm)
PRESSURE RANGE:	0-40 psig
VOLTAGE:	12 Vdc
POWER:	2.5 Watts
CONNECTOR TYPE:	ELECTRONIC In-Line
VALVE PORTS AND MOUNTING:	10-32 (M5x.8), PORTS IN BODY
SEALS:	NBR (BUNA N)
TEMPERATURE RANGE:	0° To 122°F (-18° To 50°C)
MEDIA:	Air and inert gases.
FILTRATION	40 micron
LUBRICATION	Not Required

#### VALVE SYMBOLS:

NORMALLY CLOSED



#### DRAWING:

