

DIRECT OPERATED SOLENOID VALVE

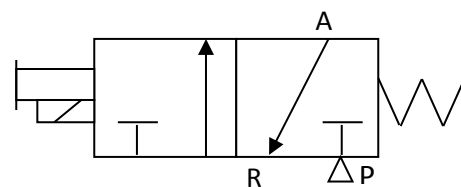
D1X317

VALVE CHARACTERISTICS:

VALVE FUNCTION:	3 WAY
ORIFICE:	.031 in (0.8mm) Cv=.02
PRESSURE RANGE:	5-105 psi.
VOLTAGE:	24 Vdc
POWER:	0.6 Watts
CONNECTOR TYPE:	ELECTRONIC
VALVE PORTS AND MOUNTING:	Manifold mount
SEALS:	NBR (BUNA N), POLYURETHANE
TEMPERATURE RANGE:	0° To 150°F (-18° To 65°C)
MEDIA:	Air and inert gases.
FILTRATION	40 micron
LUBRICATION	Not Required

VALVE SYMBOLS:

NORMALLY CLOSE



DASH 1 MANIFOLD MOUNTED VALVE

