

DIRECT OPERATED SOLENOID VALVE

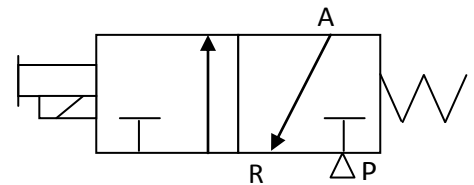
D1X322-2

VALVE CHARACTERISTICS:

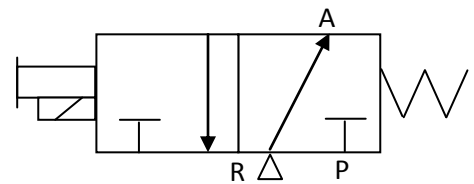
VALVE FUNCTION:	3 WAY
ORIFICE:	.062 in (1.6mm) Cv=.04
PRESSURE RANGE:	-50 to 50 psig
VOLTAGE:	24 Vdc
POWER:	2.5 Watts
CONNECTOR TYPE:	ELECTRONIC
VALVE PORTS AND MOUNTING:	10-32 (M5x.8), PORTS IN BODY
SEALS:	NBR (BUNA N)
TEMPERATURE RANGE:	0° To 122°F (-18° To 50°C)
MEDIA:	Air and inert gases.
FILTRATION	40 micron
LUBRICATION	Not Required

VALVE SYMBOLS:

NORMALLY CLOSE



NORMALLY OPEN



DRAWING:

