

DIRECT OPERATED SOLENOID VALVE

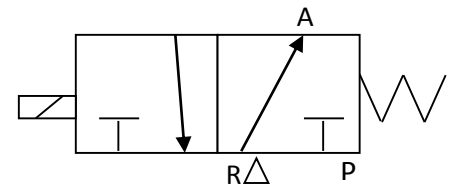
D1X345

VALVE CHARACTERISTICS:

VALVE FUNCTION:	3 WAY
ORIFICE:	.062 in (1.6mm) Cv=.04
PRESSURE RANGE:	60-150 psi. vacuum
VOLTAGE:	24 VDC
POWER:	2.5 WATTS
CONNECTOR TYPE:	ELECTRONIC CONECTOR
VALVE PORTS AND MOUNTING:	MANIFOLD MOUNT
SEALS:	NBR (BUNA N)
TEMPERATURE RANGE:	0° To 122°F (-18° To 50°C)
MEDIA:	Air and inert gases.
FILTRATION	40 micron
LUBRICATION	Not Required

VALVE SYMBOLS:

NORMALLY OPEN



DRAWING:

