

DIRECT OPERATED SOLENOID VALVE

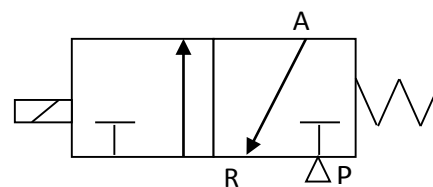
D1X391

VALVE CHARACTERISTICS:

VALVE FUNCTION:	3 WAY
ORIFICE:	.031 in (0.8mm) Cv=.02
PRESSURE RANGE:	5 to 140 psi.
VOLTAGE:	24 Vdc
POWER:	1.2 Watts
CONNECTOR TYPE:	ELECTRONIC CONECTOR
VALVE PORTS AND MOUNTING:	MANIFOLD MOUNT
SEALS:	NBR (BUNA N)
TEMPERATURE RANGE:	0° To 122°F (-18° To 50°C)
MEDIA:	Air and inert gases.
FILTRATION	40 micron
LUBRICATION	Not Required
OTHER	LED AND MANUAL OVERRIDE

VALVE SYMBOLS:

NORMALLY CLOSE



DRAWING:

