

DIRECT OPERATED SOLENOID VALVE

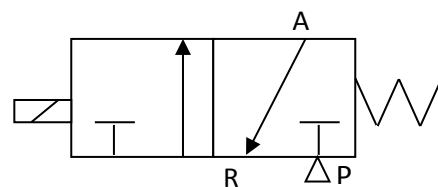
D1X397

VALVE CHARACTERISTICS:

VALVE FUNCTION:	3 WAY
ORIFICE:	.031 in (0.8mm) Cv=.02
PRESSURE RANGE:	0-100 PSI.
VOLTAGE:	24 Vdc
POWER:	0.6 Watts
CONNECTOR TYPE:	DIN CONECTOR
VALVE PORTS AND MOUNTING:	10-32 (M5x.8), PORTS IN BODY
SEALS:	NBR (BUNA N)
TEMPERATURE RANGE:	0° To 122°F (-18° To 50°C)
MEDIA:	Air and inert gases.
FILTRATION	40 micron
LUBRICATION	Not Required

VALVE SYMBOLS:

NORMALLY CLOSED



DRAWING:

