

DIRECT OPERATED SOLENOID VALVE

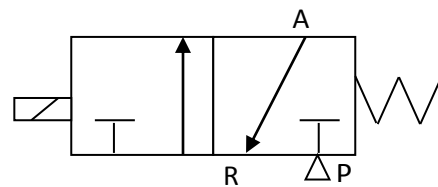
D1X398

VALVE CHARACTERISTICS:

VALVE FUNCTION:	3 WAY
ORIFICE:	.089 in (2.3mm) Cv=.055
PRESSURE RANGE:	1 bar vacuum
VOLTAGE:	24 Vdc
POWER:	1.2 Watts
CONNECTOR TYPE:	DIN CONECTOR
VALVE PORTS AND MOUNTING:	10-32 (M5x.8), PORTS IN BODY
SEALS:	NBR (BUNA N)
TEMPERATURE RANGE:	0° To 122°F (-18° To 50°C)
MEDIA:	Air and inert gases.
FILTRATION	40 micron
LUBRICATION	Not Required

VALVE SYMBOLS:

NORMALLY CLOSE



DRAWING:

