

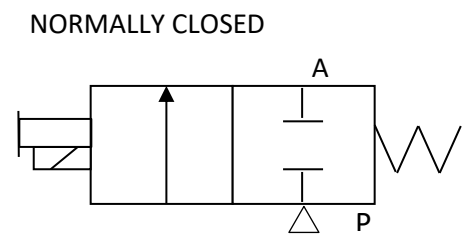
# DIRECT OPERATED SOLENOID VALVE

## D1X403

### VALVE CHARACTERISTICS:

VALVE FUNCTION:	2 WAY
ORIFICE:	.062 in (1.6mm)
PRESSURE RANGE:	50-125 psig
VOLTAGE:	12 VDC
POWER:	2.5 Watts
CONNECTOR TYPE:	DIN Connector
VALVE PORTS AND MOUNTING:	Manifold Mount
SEALS:	NBR (BUNA N)
TEMPERATURE RANGE:	0° To 122°F (-18° To 50°C)
MEDIA:	Air and inert gases.
FILTRATION	40 micron
LUBRICATION	Not Required

### VALVE SYMBOLS:



### DRAWING:

