

# DIRECT OPERATED SOLENOID VALVE

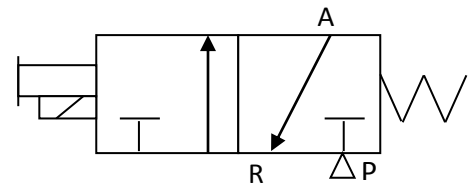
## D1X467

### VALVE CHARACTERISTICS:

VALVE FUNCTION:	3 WAY
ORIFICE:	.062 in (1.6mm) Cv=.04
PRESSURE RANGE:	50-120 psig
VOLTAGE:	24 Vdc
POWER:	2.5 Watts
CONNECTOR TYPE:	DIN 43650 (EN175301-803)
VALVE PORTS AND MOUNTING:	PORTS IN BODY/1/8" NPT
SEALS:	NBR (BUNA N)
TEMPERATURE RANGE:	0° To 122°F (-18° To 50°C)
MEDIA:	Air and inert gases.
FILTRATION	40 micron
LUBRICATION	Not Required
OTHER	L.E.D., manual override.

### VALVE SYMBOLS:

NORMALLY CLOSED



### DRAWING:

**SEE DRAWING 4000-3**