

DIRECT OPERATED SOLENOID VALVE

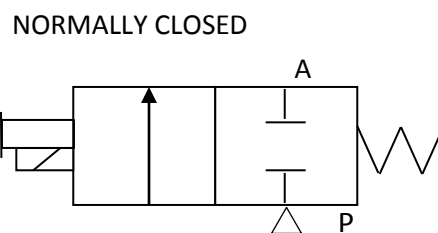
SPECIAL FOR BIMBA

D1X475

VALVE CHARACTERISTICS:

VALVE FUNCTION:	2 WAY
ORIFICE:	.089 in (2.3mm)
PRESSURE RANGE:	25-80 psig
VOLTAGE:	24 Vdc
POWER:	3.7 Watts
CONNECTOR TYPE:	ELECTRONIC In-Line
VALVE PORTS AND MOUNTING:	Manifold Mount
SEALS:	NBR (BUNA N)
TEMPERATURE RANGE:	0° To 122°F (-18° To 50°C)
MEDIA:	Air and inert gases.
FILTRATION	40 micron
LUBRICATION	Not Required

VALVE SYMBOLS:



DRAWING:

