

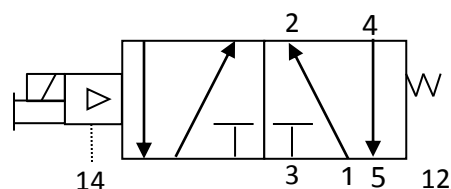
DASH 2 PILOT OPERATED SOLENOID VALVES

D2X593

VALVE #1 CHARACTERISTICS:

VALVE FUNCTION:	5/2 VALVE, PILOT OPERATED WITH SOLENOID SPRING RETURN
ORIFICE:	.100 IN (2.5MM) CV=.12
PRESSURE RANGE:	VACUUM-100 PSIG
PILOT PRESSURE:	20 PSIG MIN.
VOLTAGE:	115 VDC
POWER:	2.5 WATTS
CONNECTOR TYPE:	DIN 43650/EN 175301-803
VALVE PORTS AND MOUNTING:	MANIFOLD MOUNT
SEALS:	NBR (BUNA N)/NEOPRENE
TEMPERATURE RANGE:	0° TO 150°F (-18° TO 65°C)
MEDIA:	AIR AND INERT GASES.
FILTRATION:	5 MICRON
LUBRICATION:	NOT REQUIRED BUT MAY BE USED.

VALVE SYMBOLS:



DRAWING:

