

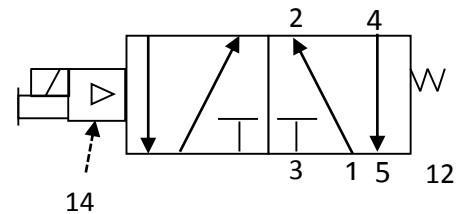
# DASH 3 PILOT OPERATED SOLENOID VALVES

## D3X374

### VALVE #1 CHARACTERISTICS:

VALVE FUNCTION:	5/2 VALVE, PILOT OPERATED WITH SOLENOID AND SPRING RETURN, PILOT SUPPLY
FLOW RATE	CV=.40
PRESSURE RANGE:	20-100 PSIG
PILOT PRESSURE	20 PSIG MIN.
VOLTAGE:	24 VDC
POWER:	2.5 WATTS
CONNECTOR TYPE:	ELECTRINIC IN-LINE
VALVE PORTS AND MOUNTING:	MANIFOLD MOUNT
SEALS:	NBR (BUNA N)/POLYURETHANE
TEMPERATURE RANGE:	0° TO 122°F (-18° TO 50°C)
MEDIA:	AIR AND INERT GASES.
FILTRATION:	5 MICRON
LUBRICATION:	NOT REQUIRED

### VALVE SYMBOLS:



### DRAWING:

