

AIR PILOTED RELAY VALVE

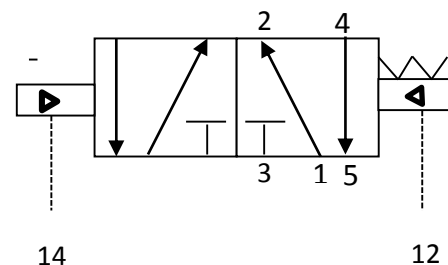
X131

(SIMILAR TO LSH0 BUT WITH 50 PSIG SPRING)

VALVE CHARACTERISTICS:

VALVE TYPE	AIR PILOT OPERATED SPRING RETURN VALVE
VALVE FUNCTION:	5/2, 4 WAY
ORIFICE:	.100 in (2.5 mm) Cv=0.12
PRESSURE RANGE:	Vacuum-100 psig
PILOT PRESSURE:	50-100 psig
VALVE PORTS AND MOUNTING:	Manifold mount
SEALS:	Viton
TEMPERATURE RANGE:	0° To 122°F
MEDIA:	Air and inert gases.
FILTRATION	5 micron
LUBRICATION	Not Required/may be used

VALVE SYMBOLS



VALVE SYMBOLS:

PICTURE:

